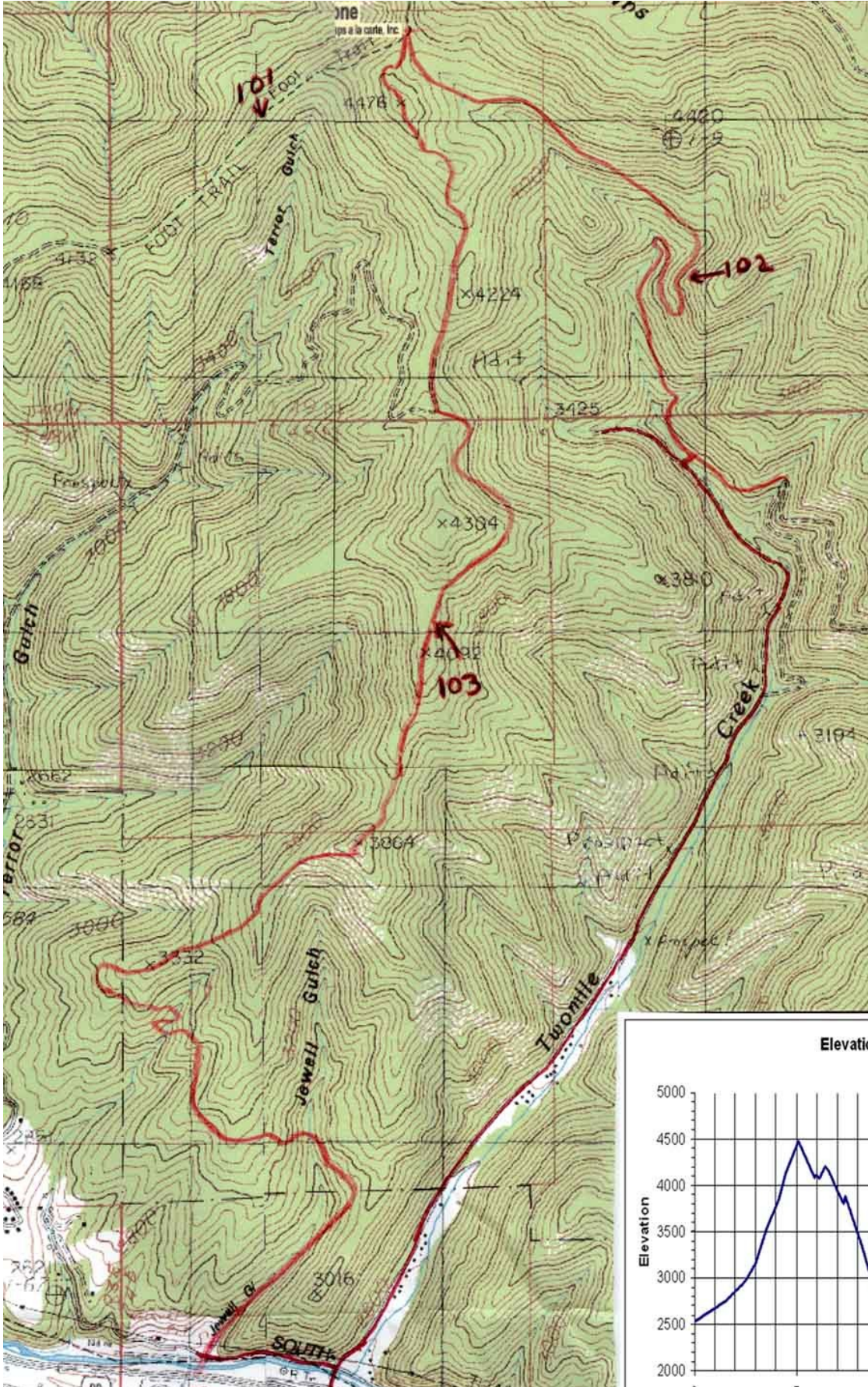


Beefcamp Jewel Loop

Provided by Friends of the Coeur d'Alene Trails www.friendsofcdatrails.org



Beefcamp Jewel Loop

Provided by Friends of the Coeur d'Alene Trails www.friendsofcdatrails.org

Route Directions:

Exit I-90 at the Osburn exit. Head South into Osburn. The ride starts at the Texaco station on your left. You will climb 2240 ft on this ride.

Mileage	Comments
0.0	Take North 3d back toward I-90 (North).
1.5	End of pavement. Continue on up following the main road.
2.3	Turn onto Beefcamp. This the track to the left (Shooting Range) headed for a Kelly Hump. Road 271 continues to the right.
2.5	You just crossed an old mine dump and portal area. Warning: spelunking (the exploration of old caves, tunnels, or portals) is illegal in Idaho. Too many people die due to carbon monoxide poisoning from fires being built in front of the portals. The smoke goes in and stays for years. Get ready for a couple of creek crossings and a old trace to follow.
3.0	Look for a bridge on the right. Across the bridge is a road. Go down (left). The road soon levels and the trail starts up to the right. Watch for 4-wheelers and motorcycles.
3.5	Climbing is moderately steep on a wide trail with rocks in spots.
4.1	The trail is working it's way up.
4.5	Almost to the crow's foot junction. The trail is winding through a hanging valley.
4.9	You have climbed 1730 ft. in 4.9 miles, but that is not it yet. You are at the crow's foot junction 101-102-103 (Evolution-Beefcamp-Jewel). Follow signs for 103 Jewel.
5.1	This is the highest point on the loop, but not the last climb.
5.9	A low spot.
6.0	A high spot. Take the road that goes down to the left, just before the top of the climb.
6.1	Take the steep road up. This is a short climb.
6.4	Top of climb.
6.6	Our trail drops off of the old road to the left.
7.0	The trail starts flowing down well through here.
7.3	At the bottom of the last steep climb on the trail.
7.4	No more hard climbs. Every climb is mellow from here down. Lots of flow.
8.2	Lots of flow switching from side to side on the ridge.
8.7	Last switchback on the trail. Trail has some ruts through this section.
9.4	You just passed through Zanetti's Quarry. Follow the road to the left.
10.0	Cross the bridge over the South Fork of the CDA River, then under I-90.
10.5	Back at the Texaco station.